

Kegonsa Sanitary District

2240 US Highway 51
P.O. Box 486
Stoughton, WI 53589

(608)873-0230 or 800-474-0230

Sewer Emergency (608)843-6026

info@KegonsaSanitaryDistrict.com

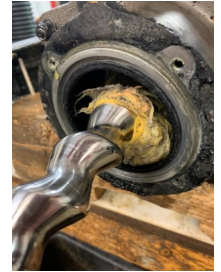
serviceoperator@KegonsaSanitaryDistrict.com

June 2022—Message From The Commissioners

What Should You Flush?

We continue to ask you for your cooperation in flushing only the three P's—Pee, Poop, and Paper. Grinder pump failures are common due to wipes/rags being flushed down the toilet. By flushing only the three P's, you are doing your part to ensure there will not be an emergency. Again, **do not flush** the following items, please dispose of these items in your trash:

- **Baby wipes, disinfectant wipes, moist wipes, etc.**
- Diapers, socks, rags, cloth, cleaning rags—all should be disposed of in your garbage!
- Sanitary napkins or tampons. Place personal hygiene products and feminine products in a wastebasket and dispose of it in your garbage.
- Collect grease and fats in a heat-resistant container, **cool**, and dispose of it in your garbage.
- Collect animal waste and dispose of it in your garbage. **No kitty litter in the toilet!**
- Goldfish stone, when cleaning fish tanks, **do not flush** the rocks down the toilet!
- Seafood shells, egg shells
- Batteries, Glass, Metal
- Plastic objects (toys, utensils, etc.)
- Coffee grounds
- Paint—not rinsing a paintbrush, but half a gallon of left over paint.



If you use a cleaning service, please make them aware that their cleaning supplies should be put in the trash, not flushed down the toilet! **If we find negligence on the part of the homeowner for the grinder pump failing, the homeowner will be charged for the repairs!** This would include the cost to pump out the basin, the parts that need to be replaced in the pump, and our service operator's labor.

Inflow and Infiltration

The total portion of user charges, which are attributable to wastewater treatment services and paid by the Kegonsa Sanitary District to Madison Metropolitan Sewerage District (MMSD) from April 1, 2021 through March 31, 2022 was \$155,398.08. In this time period the District pumped 45,090,736 gallons to MMSD for treatment. This is a decrease of 1,302,174 gallons from the previous time period. 2021 was an extremely dry year. However, our daily recordings continue show a significant increase in flow with every rain event. We believe the main cause of increased flows during rain events are sump pumps connected to the system. We all need to all do our part and make sure sump pumps are not connected to the sewer system. Remember it is a violation of KSD's Sewer Use Ordinance and MMSD's Sewer Use Ordinance to discharge clear water into the sanitary sewer.

We know you are concerned with the sewer charge rate. Following is a comparison of gallons pumped to MMSD and what we were charged for treatment in the past three years:

Date	Charged	Gallons
04/01/2021-03/31/2022	\$155,398.08	45,090,736
04/01/2020-03/31/2021	\$137,605.27	46,392,910
04/01/2019-03/31/2020	\$126,407.56	46,086,427
04/01/2018-03/31/2019	\$136,404.70	48,794,163

We're Hiring



We are looking for someone to become a member of our 4-person on call rotation to handle issues that may arise with the sanitary collection system during nights and weekends. Pay is \$320.00 per week and individual would be responsible for one week out of every four weeks. If you, or someone you know would be interested, please have them contact Brian at 608-873-0230 or 608-843-6026.

Payment Drop Box

Don't forget, we have installed a payment drop box for you to use to drop off payments when the office is closed. The drop box is located in the service entrance door next to garage door #1.



Like us on Facebook!

We will have tips and reminders for you to keep the sewer system operating at its best and save us all costs in repairs.

Commissioners

Mike Sherry, President
Dan Hillery, Secretary
Mike Petersen, Treasurer

Office Hours

Monday, Wednesday, Thursday, and
Friday 8:00 a.m. to noon

Service Operators are on Duty

Monday-Friday
7:00 a.m.– 3:00 p.m.

- The Commission's regular monthly meeting is generally held the first Wednesday of each month. Agendas are posted at the Dunn Town Hall, on the Town's website, Quick Stop, and the Sanitary District Office.
- Please continue to send your sewer user charge payments directly to the Sanitary District office to be processed. The address to send your payments to is:
PO Box 486
Stoughton, WI 53589
- For those of you who **share grinder pumps**, we believe that \$17 per home, per year is accurate for the power cost to run the grinder pump(s). If you share a grinder pump with your neighbor and the electricity to run the grinder pump comes from their home, you should be paying your neighbor your share of the electricity to run the grinder pump. It is your job to be a good neighbor.

We're on the Web!

The District has a link on the Town of Dunn's website! The Town's web address is: townofdunnwi.gov. Go to Services/Sanitary Districts/Kegonsa Sanitary District. Once there you will find our contact information, monthly agenda, sign-up form for automatic billing, and a link to our latest Newsletter.

Auto-Bill Payment Program

We are pleased to be able to offer you this convenient way to pay your quarterly sewer user charges. Currently, 264 customers are using the program. If you choose to sign up, this service will start with the September 1, 2022 billing. There are no charges for this service, but just like when you pay with a check, any transfers refused because of insufficient funds or a closed account will incur a service charge of \$25. Contact Cindy in the office if you are interested. An enrollment form is available on our link at the Town's website.

Easement Reminder

Just a friendly reminder for those of you that have grinder pump basins located on your property. When the sewer system was installed, an easement was signed for the maintenance/replacement of the District's force main and grinder pump basin. In most cases this easement is 15 foot in diameter centered on the basin, and a strip of land 8 foot in width centered on the grinder pump effluent pressure discharge line. Please be aware that if there is a substantial encroachment on the easement, we will require you to sign a recordable document identifying the encroachment so that we do not experience problems with future owners of your property who might not have been aware of the problem if we need to excavate for repairs or replacement of the grinder pump basin or pressure discharge line. The easement is important. It identifies the area, which the District requires in order to maintain the grinder pump, basin, and force main and, therefore, the sewer service to your property. When you build within the easement, you may be causing a substantial problem for yourself and, if you share a pump, for your neighbors if repairs are necessary. However, we would prefer to avoid this situation before it happens. So, if you are contemplating any landscaping or building within the KSD easement, remember that it may be necessary **to remove the landscaping or building at your expense** if the line or grinder pump/basin needs repair. If you have any questions about where the easement is located or the kind of landscaping that would present a problem, please contact Brian.

Electricity Reminder

If you share a grinder pump with your neighbor, one of you provides the electricity to the pump. Occasionally the District experiences problems when a homeowner accidentally turns off the power to the pump (shuts off breaker or has an electrician visit to rewire something else in the home). Remember, our pump requires a separate circuit. Altering that can cause the pump to malfunction. The electricity needs to be on so the pump runs to avoid a backup in any of the homes served by the grinder pump station. We all want to avoid that situation. If you have any questions about the electricity, please contact Brian at 608-843-6026.

Spring Reminder!

Our service operators inform us that many residents have planted trees and/or bushes very close to the grinder pump basin. If you have a grinder pump basin on your property, please be sure to prune/trim the plants so our service operators can gain access to the pump should repairs be necessary. Also, if you require service please remove any large decorative items that may be on top of the basin prior to the service operator's arrival.



Private Lateral Inspection

Do you know the condition of your private lateral? (*Your private lateral is the sewer pipe from your home to where it connects into the KSD sewer system—it is your responsibility to maintain.*) We encourage you to have your private lateral televised looking for cracks/breaks where clearwater, sand, rocks, and dirt can enter the system. You will need to hire a private company to televise your lateral. This photo shows the condition of one of our customer's lateral which caused a backup in their home. Also, one thing you all can do as homeowners to prevent a sewer backup in your home is to have a backflow preventor installed in your private lateral. Contact your plumber for more information.

