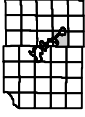


Town of Dunn

Agricultural Land Evaluation



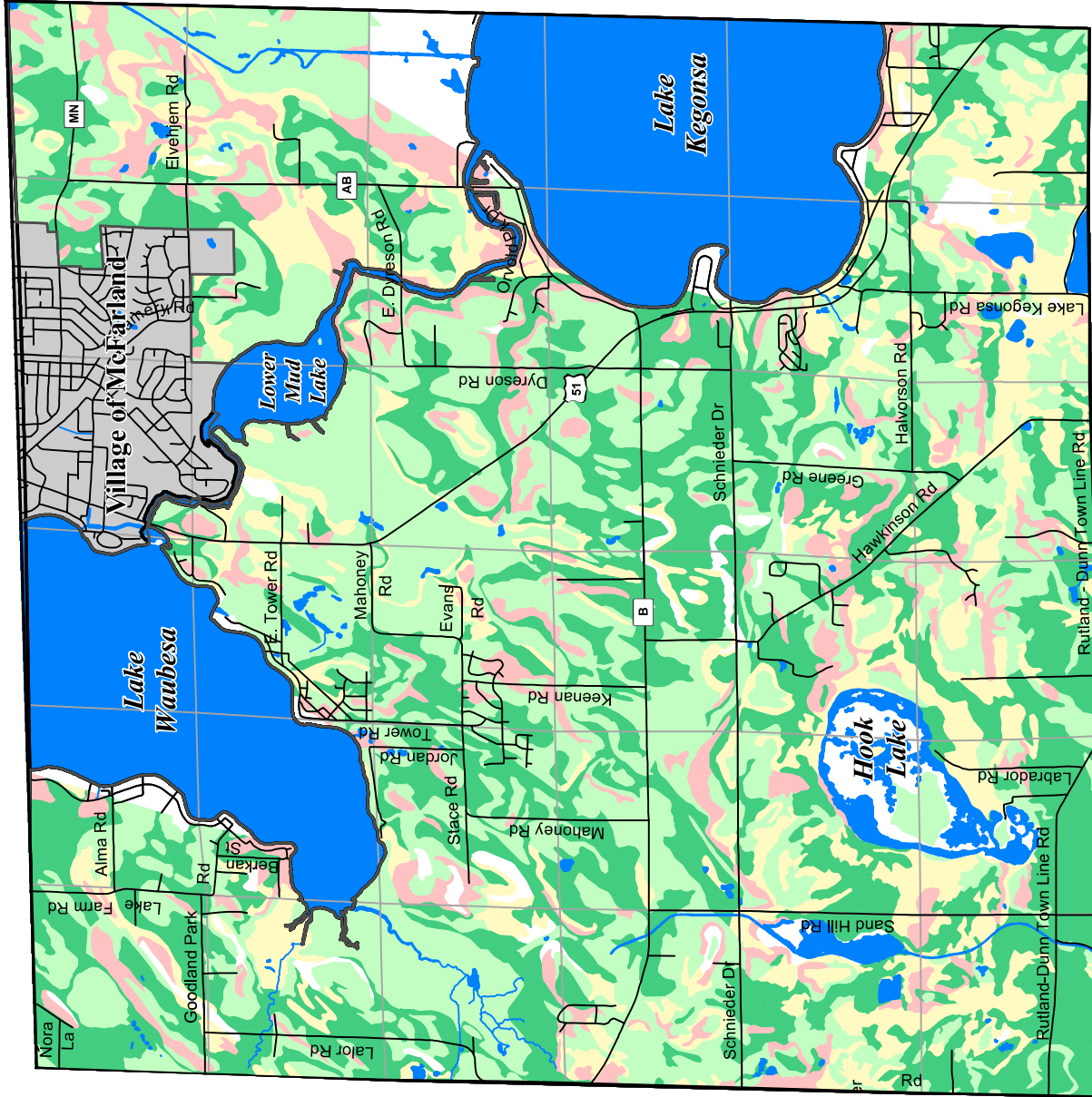
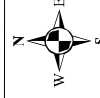
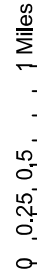
Town of Dunn Comprehensive Plan Map A-2

- Agricultural Groups**
- I, II (best soils for agricultural use)
 - III, IV
 - V, VI
 - VII, VIII (least productive soils)
- Road
 Section boundary
 Stream or ditch
 Open water

Agricultural Groups are based on the Land Evaluation Site Assessment rating system from Land Evaluation and Site Assessment: A Guidebook for Rating Agricultural Lands, Second Edition, published by the Soil and Water Conservation Society

See Appendix for more information about Agricultural Land Evaluation.

Jun, 2007



Source Info:
 Agricultural Groups: Digital Soils (NRCS, LCD, LICGFP)
 Section Boundaries: 2000 (DCLIC)
 Road Network: 2006 (DCCP)
 Water: 2000, Orthophoto Derived (DCLIO)

This map was prepared through the Dane County Department of Planning and Development in conjunction with the Dane County Land Conservation Department, Dane County Land Information Office and the Dane County Regional Planning Commission.